

BOVEN'S

veiling

ASIAN ARTS

INTERNET AUCTION
WEDNESDAY 9 OCTOBER 2013 14:00 HRS



49

VIEWING
SUNDAY 6 OCTOBER AND MONDAY 7 OCTOBER 11:00-17:00 HRS
AT

GALERIE WITTEVEEN
KONIJNENSTRAAT 16 1016 SL AMSTERDAM NL

BOVEN'S

veiling

ASIAN ARTS

INTERNET AUCTION

WWW.ARTFACT.COM

AND

WWW.EPAILIVE.COM

OCTOBER 9 AT 14:00 HRS

CATALOGUE CAN BE DOWNLOADED AT
WWW.BOVENS.BIZ

BIDDING

ONLINE BIDDING IS THROUGH WWW.ARTFACT.COM
WRITTEN BIDS CAN ALSO BE ACCEPTED VIA WWW.EPAILIVE.COM

THE CATALOGUE IS ON BOTH SITES ONLINE AS WELL
REGISTERING IS FREE
WHEN BUYING THROUGH ARTFACT OR EPAILIVE
3% WILL BE ADDED TO THE HAMMERPRICE.

R. BOVEN MAKELAAR TAXATEUR RG
ELANDSGRACHT 109 A30 1016TT AMSTERDAM

+31 (0)6 52012759

EMAIL INFO@BOVENS.BIZ

WWW.BOVENS.BIZ



001

5 various snuff bottles,
one glass and four stoneware
China
height 5-7 cm.

150-200



002

5 various snuff bottles,
two glass and three stoneware
China
height 6-11 cm.

150-200



003

5 various snuff bottles,
two glass and three stoneware
China
height 7-8 cm.

150-200

3



004

5 various snuff bottles,
one glass and four stoneware
China
height 7-7,5 cm.

150-200



005

5 various snuff bottles,
three glass and two stoneware
China
height 6,5-9 cm.

150-200



006

5 various snuff bottles,
three glass and two stoneware
China
height 7-9 cm.

150-200



007

5 various snuff bottles,
three glass and two stoneware
China
height 7-8 cm.

150-200



008

5 various snuff bottles,
three glass and two stoneware
China
height 6-8,5 cm.

150-200



009

6 various snuff bottles,
one glass four stoneware, one pressed
wood
China
height 5,5-8,5 cm.

150-200

4



010

A porcelain baluster fencai vase
decorated with go-players, the reverse
with a poem
China Republic
height 18,3 cm.

120-200



011

A blanc de chine group of two figures
China
early 19th Century
height 28,3 cm.

250-300



012

A grey glazed pottery figure of a Budai,
Japan
19th Century
height 23,5 cm.

500-600



013

Liang Huilan ps for Liang Chuhong
1938
Shaxicun Pioneers (mudan), prunus
(meihua) and sparrows
44 x 106 cm.

100-180



014

A bronze figure of a carp
China
18th Century
long 29 cm.

250-300

-



015

A bronze tool vase cast with a dragon
on the shoulder
China Ming period
height 16 cm.

250-350

-

5



016

A bronze seal in the shape of a ram
China
18th Century
4,5 x 4,8 x 4,2 cm.

200-300

-



017

A porcelain tea dust bowl
China
20th Century
ø 12,2 cm.

200-300

-



018

Two gilt lacquer bronzes of seated
scholars
China
late Ming period
height 16 cm.

1.500-2.000



019

A bronze table screen in the shape of a Sung mirror depicting an Emperor visiting the Moon palace
China
18th Century
ø 27 cm.

400-500



020

A tea pot marked with an 'S' for soja Imari
18th Century,
cover not matching

300-400

-



021

A pottery storage jar impressed with mesh pattern
Burma
17th/18th Century
height 29 cm. ø 35 cm.

950-1000

6



022

A bronze figure of Buddha
Khmer
18th Century
height 16 cm.

350-500



023

A bronze cylinder vase decorated with figures in a wooded landscape
China
18th Century marked
height 19,5 cm.

250-350



024

A brown glazed shallow bowl
Tang style
ø 14,6 cm.

200-250



025

A bronze figure of Daruma
China
18th Century
height 15 cm.

400-500



026

A shallow pottery bowl with an incised
decoration
China,
Song period
ø 14 cm.

150-250



027

9 porcelain blue and white dishes
decorated with a pagode and cranes
Kangxi
marked with an artemisia leaf
ø 24,6 cm.

1.500-2.000

7



028

A lacquer box with rectangular cover
decorated with mother of pearl birds
China
Tang-style
13,4 x 10,4 x 4,3 cm.

350-500



029

An Arita cup and saucer iron red deco-
ration of a bird and a poem
18th Century

350-500



030

An Imari tankard
18th Century
height 13,5 cm.
Provenence: Christie's The Nanking
Cargo 4171

250-350-



031

2 Imari dishes
18th Century
ø 22,5 cm.
Provenance: Christie's The Nanking
Cargo 4171

250-350



032

A famille jaune square tapering vase
each side decorated with a figure
marked with an artemisia leaf
China
height 22,8 cm

500-600



033

2 Imari miniature tea pots
18th Century
height 6,5 cm.

600-800

8



034

A stoneware small jar with two handle,
dark brown glaze stopping short of
the base
China
Tang period 618-907
AD height 10,8 cm.

650-800



035

A Chinese sword entirely made of
grayish/green jade including the
blade, with openwork scabbard made
in two pieces
executed in Western Han style.
China,
Sichuan 20th Century
long 44 cm.

2.500-2.800



036

A stoneware Cizhou type bowl with
white slip and brown vegetable
decoration
China
13th/14th Century
height 8,5 cm. ø 21,7 cm.

350-500



037

A bronze spoon with flat leaf shaped bowl, green patination.

China
Tang period. (610-907 AD)
long 33 cm.

400-500



038

A celadon small bowl with two fishes and gold laquer restoration

China
Sung style 20th Century
ø 14,2 cm.

120-200



039

A bobbin shaped gourd cricket-cage with overall dragon decoration, wooden stop.

China
20th Century
long 20,5 cm.

300-400

9



040

A pottery acrobat
China Sichuan province
Eastern-Han 3rd Century AD
height 18,3 cm.

550-650



041

A bronze wine-ladle, the hollow stem ending in a Taotieh mask, with ring for suspension.

China,
probably Han period (206 BC-220 AD)
long 34 cm.

450-550



042

A stoneware vase with vegetable design

China
Yuan style
height 30 cm.

550-700



043

A pottery house with sancai glaze in green and brown.
China
Ming period (1368-1644)
height 40 cm.

500-600



044

A pottery globular shaped vase with grey glaze
Korea
19th Century
height 19 cm.

100-150



045

A bronze openwork garment-ornament in the shape of a stag
China
Liao period. (916-1125 AD)
long 8 cm.

350-450

10



046

A bronze incense burner in the shape of an elephant and female rider
Japan
probably 18th Century
long 26 cm.

1200-1.500



047

A zitan figure of Li Tieh-kuai as paralytic beggar leaning on his stick.
China
19th/20th Century
height 33 cm.

1.800-2.200



048

A rectangular cloisonne plaque
China
late 18th Century
37,4 x 24,6 cm.

1200-1.500



049

A bamboo wrist-rest decorated on the concave side, with a deeply incised grasshopper on a flower branch.

China
early 20th Century
25 x 6,5 cm.

350-450



050

A wood biton carved with figures and pine trees

China
19th Century
height 17 cm.

220-300



051

A gilt bronze pendant in "lunula" shape, with relief ribs and embossed knobs.

South West China, Sichuan Province.
Han Period (207 BC-222 AD)
long 20 cm.

1.000-1.200

11



052

A bamboo biton carved with a scholar and a boy

China
19th Century
height 12,8 cm.

250-350



053

A stoneware Jun Yao dish with gold lacquer repair, applied with a thick dark grey and lavender glaze.

China
Song/Yuan period 13th/14th Century.
ø 15,8 cm.

350-500



054

A fine boxwood okimono of a Dutchman wearing clogs

Japan 19th Century
height excl base 24 cm.

800-1.000



055

A bamboo brush pot "Bitong" with deeply carved scene from the novel of The Western Chambers, on the back incised characters.
China, Canton
early 19th Century
height 12.8 cm.

400-500



056

A wood figure of a scholar
China
18th Century
height 24 cm.

800-1.000



057

A turned zitan lidded cylindrical container, to hold a sutra or poem, of unusual and elegant shape.
China
19th/20th Century
height 25 cm.

750-900

12



058

An iron silver inlaid biton
China
late 19th Century
height 12,4 cm.

150-250



059

A bamboo wrist-rest decorated on the concave side, with an incised flowering plant and fungus. Nice old patination (some wormholes on the back)
China
late 19th/20th Century
26,8 x 6,8 cm.

350-500



060

An impressive pottery tile with sancai glaze depicting in relief Guandi, the God of War in full armor.
China
late Ming period (1368-1644 AD)
55 x 37,5 cm.
(chip under the right feet)

1.900-2.200



061

A bronze censer with lion masks handles Xuande seal mark 5th year
China
19th Century
ø 16 cm. Height 7 cm.

650-800



062

A red stoneware Yixing teapot in trunk-shape, with glazed parts. Impressed seal-mark.
China, Yixing
19th Century
height 10 cm. long 19,5 cm.

300-400



063

A Yixing rectangular tea pot
China
19th Century
long 17,3 cm.
restoration to the finial

300-400

13



064

A Yixing teapot twined decoration marked Xu Jindi zhi the cover marked Jindi
China, Yixing
height 8,8 cm.

250-350



065

A Yixing teapot, lotus shaped marked Fang Liying
China, Yixing
height 10,8 cm.

250-350



066

A red stoneware Yixing teapot in oval-shape, with relief flowering branches. Impressed seal-mark.
China, Yixing
19th Century
height 9 cm. long 18 cm.
(cover with chips)

200-300



067

A red stoneware Yixing teapot of lobed melon shape, the cover with lion figure. Impressed seal-mark.
China, Yixing
19th Century
height 10 cm. long 16 cm.

350-450



068

A Yixing tea pot attributed to Yang Pengnian
China Yixing
height 11 cm.

100-200



069

A Guangdong plain tea pot and a Yixing lotus-shaped tea pot 19th Century
long 14 cm. and 19,3 cm.
China

400-500

14



070

A rare red stoneware bottle with long cylindrical neck, on the globular body a relief decoration of Fanghoans.
China or Europe
18th Century height 20 cm. (chips)

350-500

Although the material has Yixing characteristics, the shape is very unusual and could be European as well.



071

A blanc de Chine incense burner of baluster shape, with two loop handles and standing on three feet.
China Dehua
ca. 1650-1700 height 7 cm.
ø 12 cm.
compare: Donnely. Blanc de Chine. 1969. pl. 10 no. A.

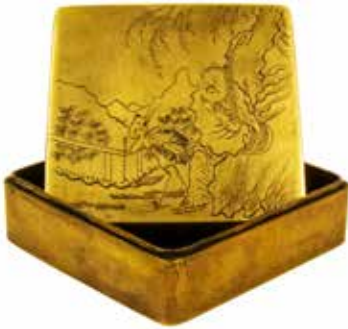
450-600



072

A fine pottery sancai glazed bactrian camel
China
Tang dynasty 618-907
height 64 cm.
with Kotella thermoluminescence test dated March 1994

20.000-25.000



073

A brass ink box, the square lid engraved with a scholar and a crane
China
19th Century
9 x 9 x 3,8 cm.

150-200



074

An ivory and white-metal mounted parasol stick with dragon mask handle bearing a monogram 'MTK'
Canton
19th Century

650-800



075

A cloisonné brush pot
China
20th Century
height 12,8 cm ø 15,5 cm.

400-500

15



076

A 'fine' kraak'porcelain charger decorated in excellent blue with ducks in a river landscape, surrounded by alternate panels of peach and tassels
China
Wan-Li period 1572-1619
ø 36 cm.

2.500-2.800



077

A blanc de Chine censer of conical shape, with relief decoration of Shou characters, on three feet.
China Dehua,
early 18th Century
height 9,2 ø 12 cm.

400-500



078

A porcelain blue and white dish with serpentine border decorated with houses in a landscape
China
18th Century
ø 22 cm.
Provenance: Christie's The Nanking Cargo 4171

150-200



079

Three various porcelain blue decorated sauce boats and a saucer, all decorated with flower sprays, one interior decorated with a man in a boat
China
18th Century
long xx cm.

500-700



080

A series of twelve sancai glazed earthenware figures, all carrying the different animals of the Chinese Zodiac.
China,
Ming period (1368-1644 AD)
height 20 cm.

1.800-2.000

16



081

A porcelain Guan type brush-pot of oval trunk form with grayish blue glaze.
China, Qing period
height xx cm

300-400



082

A bronze grater for nutmeg or rhino-horn, sometimes regarded as money, then called Lun Niu Hsing, with a coiled dragon decoration.
China
Western Han period (206 BC- 24 AD)
12,5 x 4,2 cm.

300-400



083

A bronze tripod ding
China Eastern Chou
Warring States period 722-403 BC
deep 20 cm. height 16,5 cm.

2.000-2.200



084

A celadon earthenware vase
China
Sung Dynasty 960-1279
height 9 cm.

900-1.000



085

A Batavia porcelain tea pot with
famille rose panels of flowers
China
18th Century
height 12,5 cm.

350-500



086

A earthenware figure of a scholar and a
dog in Chizhou style
China
19th Century
height 33,5 cm.

150-200

17



087

A brass plate decorated with figures
on a terrace the border with two drag-
ons marked Xuande
China
Qing Dynasty
ø 27,6 cm.

200-300



088

A bamboo brushpot "Bitong" the sur-
face covered with a thin layer of dark
lacquer carved out with a peacock
decoration.
China,
19th Century
height 13,5 cm.

450-600



089

A baluster polychrome jar
China
Ming period 2nd half 16th Century
height 15,5 cm.

850-1.000



090

A bobbin shaped Dongké, Kiangnan Ting, vase with fine cream-white crackled glaze.
China, Anwei, late Ming period
height 17,5 cm.
see: Penkala, M. Magic Blanc de Chine, 1980. illustr. on p.161. LVI.
(Ex Collection Th. van Veen)

550-700



091

An earthenware figure of a drummer
China
Eastern-Han period
height 32 cm.

750-900



092

A large earthenware Phoenix ewer, with slender neck, inspired by Sassanid silver vessels.
China. Tang Period (618-906 AD)
height 38 cm.
Ref. H.Sullivan, Chinese Ceramics, Bronzes and Jades in the Collection of Sir Allen and Lady Barlow. 1963. p. 35. c.235, pl. 25a.

4.500-4.800

18



093

A Swatow polychrome charger
China
Ming period
ø 34 cm.

600-700



094

A slender baluster shape Dongké, Kiangnan Ting, vase with fine cream-white crackled glaze.
China, Anwei
late Ming period
height 17,5 cm.
see: Penkala, M. Magic Blanc de Chine, 1980. illustr. on p.161. LVI.
(Ex Collection Th. van Veen)

550-700



095

A small Blanc de Chine Dongké type vase with cream-white fine crackled glaze, cast with plum-blossom decoration
China, Fukien,
Kangxi period
height 10,8 cm.
see: Penkala, M. Magic Blanc de Chine, 1980. illustr. on p.158. XLV.
(Ex Collection Th. van Veen)

300-400



096

A bamboo wrist-rest engraved on the concave side with a mountainous landscape and pavilions.

China

19th/20th Century

22,3 x 5,1 cm.

350-500



097

A porcelain vase with blue decoration of flower heads

China

20th Century

seal mark Qian Long

height 28,5 cm.

250-350



098

A rectangular zitan box, decorated with inlay in the "bai bao gian" technique with birds between flowering branches on the lid.

China

20th Century

7 x 20,5 x 12 cm.

350-500

19



099

A porcelain dish with blue decoration of a vase of flowers and foliage

China,

18th Century

ø 31,6 cm.

400-500



100

A small blue and white dish decorated with a lady and a boy

China

Kangxi period

ø 10,4 cm.

200-300



101

A pottery Dongkhe vase,

China

18th Century

height 20,3 cm.

900-1.000



102

A bronze lobed dish cast with a poem
China
17th Century or later
wide 17 cm.

350-500



103

A large stoneware Cizhou storage
jar with scafiato bold scrolling leaf
decoration
China, Cizhou
Yuan period (1279-1368 AD)
height 50 cm.
(top of neck and part of ear restored)

4.500-4.800



104

A bronze figure of a seated dignitary
China,
18th Century
height 18,5 cm.

120-200

20



105

A bronze circular box with domed lid
engraved with a dragon
China
18th Century
ø 12,8 cm.

200-300-



106

A celadon tripod censer
China
20th Century
height 8,9 cm. Ø 11,5 cm.

250-300



107

A miniature Imari vase, three Chinese
small soft paste vases and a seal paste
box and cover

220-300



108

A Japanese Wan Li-style dish, three saucers decorated with vases of flowers, a box and cover and a bowl on stand China, Vietnam

150-250



109

A bowl and cover, two Khmer bowls and three small vases

150-250



110

Two bronze vases cast with kylins in relief
China
Qian Long 18th Century
height 17 cm.

600-700

21



111

A huang li and mother of pearl box the mother of pearl decorated pearl box the mother of pearl decorated with figures,
China
late 19th Century
12 x 9,5 x 4,5 cm.

200-250



112

A pottery Cizhou shallow bowl,
China
Yuan period
ø 14 cm.

150-200



113

A straw glazed figure of a groom
China
Tang period
height 27,5 cm.

300-400



114

A rare turned serpentine deep bowl with everted rim and rounded base, on the outside some iron oxidation.
China,
Tang period (618-907 AD)
ø xx cm.

750-900



115

A bronze gu vase
China
Ming period
height 18,5 cm.

250-350



116

A longan figure of an Immortal
China
height 30,5 cm.

450-600

22



117

A Chingbai stemcup of lotus shape with relief ribs and rims around the ribbed stem.
China,
probably Yuan period
height 8 cm.

350-500



118

Two bronze candlestick holders in the shape of kylin on an openworked base
Sino Tibetan
19th Century
height 13,4 cm.

400-500



119

A wood silver inlaid figure of Buddha
China
late 19th Century
height 12 cm.

300-400



120

A wooden brush with turned stem, the finial deeply carved with scenes of scholars.

China
20th Century
long 39 cm.

250-350



121

A longan gourde shaped box and cover

China
long 21 cm.

250-350



122

A longan melon shaped box and cover
China
long 16 cm.

250-350

23



123

A shallow octagonal lobed pottery dish with sancai glaze moulded with central flowerhead, the rim with four lotus flowers alternating four peonies.

China
Liao Dynasty 11th or 12th Century
ø 13 cm.
compare: Krahl, R. Chinese Ceramics from the Meiyintang Collection, 2006. Vol.III. p.309 no. 1330.

1.500-1.800



124

A silvered copper jug
China
18th/19th Century
height 22 cm.

500-700



125

A boxwood figure of Li Ti Kuai
China
19th Century
height 13,3 cm.

150-200



126

An ivory and horn snuff bottle engraved with figures and a text (top and base are ivory)
China
19th/20th Century
height 8 cm.

120-150



127

A ribbed baluster Cizhou stoneware pot with conical uprising rim, with stylized floral decoration in dark brown against a cream- white glaze and wooden carved lid with coral branch.
China,
Yuan/Ming period 14th/15th Century.
height 12 cm.

-
400-500



128

An ivory figure of a dignitary
China
19th Century
height excl. base 11,7 cm.

200-300

24



129

A pottery ox cart and rider
China
Han Dynasty 206 BC-220 AC
with Oxford thermoluminescence test
dated September 20th 2013
long 47 cm.

4.500-5.500



130

A wood panel carved with figures near a house
China
20th Century
7 x 16,5 x 1,9 cm.

100-120



131

A Hongmu brushpot or "Bitong" in gnarled trunk shape
China
19th/20th Century
height 14 cm.

400-500



132

A large dark brown stoneware jar with five relief knobs on the shoulder.
China
Yuan period (1279-1368 AD)
height 27 cm. ø 36 cm.

650-800



133

Two earthenware attendants with sancai glaze, standing on octagonal bases, the separately moulded heads with conical hats.
China, Ming Dynasty (1368-1644)
height 45 cm.
(the unglazed parts are a slightly worn)

1.500-2.000

25



134

A silver arch (pailou) cast with text referring to the Li ji, baishi liufang-song jun zhu jie
China
marked HC Hung Chong 1860-1930,
height 8,9 cm

400-500



135

Two silver miniature flower pots on four legs with branches with enameled leaves
China
makers mark probably Cum Wo
Queen's Road Hongkong
height 15 cm.

400-500



136

A bronze censer of globular shape engraved with figures in panels, the lid with dragon finial
China
19th Century
height 18,5 cm.

500-700



137

A Chinese laquered wood two-handled censer with two fu characters one for Buddha and one for Happiness
China
18th Century
height 22,8 cm.

500-700



138

A bronze two ring handled brazier
China
Ming Dynasty
ø 14,8 cm. height 8,5 cm.

250-350



139

A bronze censer carved with figures in a landscape
China
19th Century
height 5 ø 12,4 cm.

300-400

26



140

An earthenware courtesan with sancai glaze, both hands in the sleeves and standing on an octagonal base, the separately moulded unglazed head with elaborate hair-dress is (later) fixed to the body
China
Ming Dynasty (1368-1644)
height 39 cm.

600-700



141

A bamboo figure of Li Ti Kuai
China
19th Century
height 31,5 cm.

600-700



142

A wood figure of Shao Lao
China
20th Century
height 20 cm. excluded base

300-400



143

A white marble dish in the shape of a lotus-leaf.

China
Yuan period (1279-1360 AD)
ø 26 cm.

700-800



144

A hongmu wooden ruyi scepter, well carved as a gnarled Linghzi with a large head, from the base a younger sprout is spiraling around the stem.

China
20th Century
long 30 cm.

750-900



145

A bronze parcel gilt vase cast with a kylin in relief

China
Yuan period
height 19,8 cm.

450-600

27



146

A bamboo biton with grass script calligraphy engraving by Ma Yijian from Wenzhou of the poem Aillanshou by Zhou Maoshu from the Song dynasty

China
circa 1980
height 14,9 cm. ø 12 cm.

100-200



147

A bamboo sculpture in the shape of a sitting immortal with a large head, and long beard.

China
20th Century.
height cm.

250-350



148

A bronze figure of a bird

China
18th Century
long 18 cm.

200-250



149

A rectangular Duan ink-stone decorated with a mythical animal and vase of flowers on a table, with oval reservoir in a Zitan box, the lid with incised characters and seal.

China
20th Century
30 x 21 cm.

450-600



150

A plain gourd cricket cage of natural baluster shape, with Huanghuali mounts and nicely carved openwork bamboo ornament in the lid.

China
19th/20th Century
long 12 cm.

600-700



151

A bronze figure of Lhamo's donkey
China
19th Century
height 13 cm.

200-250

28



152

A turquoise glazed ding with hexagonal body on three shaped legs

China
late Ming period
height 21 cm.

400-500



153

A bronze hen shaped washer

China
19th Century
long 17,5 cm.

180-250



154

A bronze silver inlaid censer and cover with kylin finial and two shaped handles on three shaped legs

China
19th Century
height 23 cm.

600-700



155

Three jade carvings, including a circular brown and white jade belt slide with a seated official, ø 5.5 cm., a honey brown rectangular plaque with mythical beasts. 6,5 x 4,5 cm., and a black Bi disc decorated with archaistic scroll pattern. ø 8,5 cm.
China
20th Century.

350-500



156

A bamboo figure of the Peach Immortal (Taoxianren) Dong Fangshuo.
China
late Qing
height 16,5 cm.

150-250



157

A small Junyao bowl
China
Yuan Dynasty (1279-1368)
height 5,2 cm. Ø 10,8 cm.
Provenance: Sothebys Amsterdam
Nov 2000 lot 422

700-800

29



158

A porcelain monochrome bowl
China
height 8 cm. Ø 17,5 cm.

140-200



159

A resin figure of a Ming style warrior
height 25 cm.

300-400



160

A pottery storage jar of ovoid shape
impressed with a mesh pattern
China Eastern Zhou
Warring States period 722-403 BC
height 35 cm.

4.000-4.500



161

A pottery vase with grey green glaze decorated with cranes
Goryeo 12th/13th Century
height 19 cm.
a fire crack under and one encircling the base

500-600



162

A Korean celadon bowl with 2 Japanese gold laquer restorations
Goryeo period (918-1392)
ø 19 cm. height 6 cm.

250-350



163

A Korean oil bottle
Choson dynasty (1392-1910)
ø 9,5 cm. height 9 cm.

80-100

30



164

A bronze figure of the green tara
Tibet
19th/20th Century
height 28,5 cm.

350-500



165

A Tibetan handbell (ghanta) and vajrs (dorje) with later cloth holders, on the bell rings of vajras and wheels of law, the finial with Prajnaparamita,
ca 1800 bell height 17 cm. Vajra 12 cm.

200-300



166

A Tibetan copper offering set comprising a ritual waterpot decorated with sixfold wish for long life, a small saucer, a tripod stand and a large bowl

200-300



167

An Eastern Tibetan derge, the sheath with silver mounting set with one turquoise and two coral beads length 50 cm.

Provenance La Route du Tibet Paris

400-500



168

Two bronze dragon vases
Japan
Meiji
height 24,5 cm.

300-400



169

A bronze dragon vase with Xuande seal mark
Japan
Meiji
height 29,5 cm.

1.000-1.200

31



170

An ivory netsuke of a sennin looking upwards holding a lotus blossom in the left hand
Japan
18th/19th Century
height 10 cm.

800-1.000



171

A black laquer box from Aizu (aizuri) decorated with fans floating on water
Japan
Showa period
29,7 x 26 x 6 cm.

80-100



172

A wakanuri laquer kogo and tomobako
Japan
signed Shosai ø 7,3 cm.

90-120



173

A Hirado porcelain dish
Japan
Meiji
14,3 x 14,3 cm.

80-120



174

A Kyoto-ware kashiki decorated with
three friends of winter signed Gyozan
Okada,
Japan
Taisho period
ø 19,5 cm.

90-150



175

A bizen hanging vase decorated with
the wind demon
Japan
19th Century
height 19 cm.

100-150

32



176

Two porcelain bowls with blue takokarakusa decoration
Japan
ø 14,4 cm.

100-150



177

A red pottery baluster jug with bird
shaped spout,
Japan
height 23 cm.
seal mark on the shoulder

-100-150



178

A bronze baluster vase inlaid with
cranes under a rising sun
Japan
height 20,6 cm.

200-300



179

A bronze vase and tomobako dated January 1966 signed Kikuchi Kumaji (1925-1982) Yamagata Japan height 29 cm.

50-80



180

A bronze vase and tomobako signed Nakajima Yasumi II (1905-1986) Osaka Japan height 20 cm.

100-150



181

A bronze vase by Kobori Masaharu (1956) signed Masaharu Japan height 27,5 cm.

60-80



182

A cylindrical bronze vase and tomobako by Ohaka Mitsu (1936) Takaoka signed Mitsu Japan height 23,5 cm. ø 8 cm.

180-250



183

A bronze vase signed by Living National Treasure Takahasi Keiten 1920-2009 Japan height 19 cm.

350-450



184

Two iron Obon dancers signed by Living National Treasure Takahasi Keiten 1920-2009 Japan height 11,2 cm.

100-150



185

A bronze amphora shaped vase and tomobako, signed Koshun (Hiramatasu Hiroharu 1896-1971) Japan height 25 cm.

350-450



186

A bronze vase and tomobako, signed Yokokura Kazan 1915-1984 Japan height 18 cm.

200-300



187

A bronze slender vase signed Japan Meiji or Taisho period height 27,5 cm.

200-300

34



188

A bronze crane's neck vase signed with six character, Japan late Edo or Meiji period height 22 cm.

100-150



189

A bronze crane's neck vase with dish-shaped base Japan late Edo or Meiji period height 24 cm.

100-150

CONDITIONS OF BUSINESS

The buyer is the person accepted as the highest bidder.

The hammer price is the highest amount accepted by the auctioneer for a lot.

The purchase price is the hammer price plus vat.

THE BUYER

is the person accepted as the highest bidder by Bovens. The decision whether or not to accept a bid shall be made by the auctioneer. The purchase agreement comes into being at the moment when Bovens accept a bid as the highest bid. Each bidder is deemed to bid in his own name and for his own account.

Anyone wishing to bid at this sale must fill out and sign a registration form before the sale begins.

Joining the sale and bidding, the bidder therewith declares to have full knowledge of the state of the object acquired by having the object inspected at the viewing.

Condition reports are available

PREMIUM

A buyers premium shall be payable by the buyer to Boven's Veiling at a rate of 26.62% inclusive vat of the hammer price.

PAYMENT

The buyer shall pay the purchase price to Bovens ultimately October 10th before 1600 hrs GMT, failing which he shall be in default. Payment can be done by Mastercard, and this card only, Paypal or wiring. When wiring the money notice that the full amount stated in the invoice has to be received in Bovens bankaccount. All costs for wiring are for buyer. For payment by creditcard or Paypal 3,4% is to be paid over the amount due.

RELEASE OF LOTS

The title to the lot shall not pass to the buyer until he has fully paid the purchase price. Payment has to be direct after the sale and goods have to be collected before October 10 1600 hrs GMT. After that date goods will go into storage, storage costs are euro 3,50 per day.

